

Rocking Piston Type Dry Vacuum Pump (Standard Type) DOP Series

Features

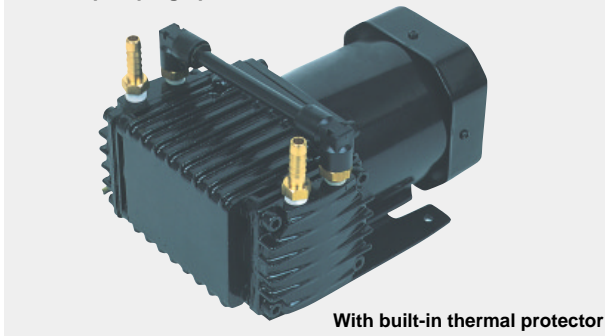
- There are Standard type, Pressure type, Pressure and Vacuum type.
- Pressure type is possible to use as the small compressor.
- The system is simple and easy maintenance.

Applications

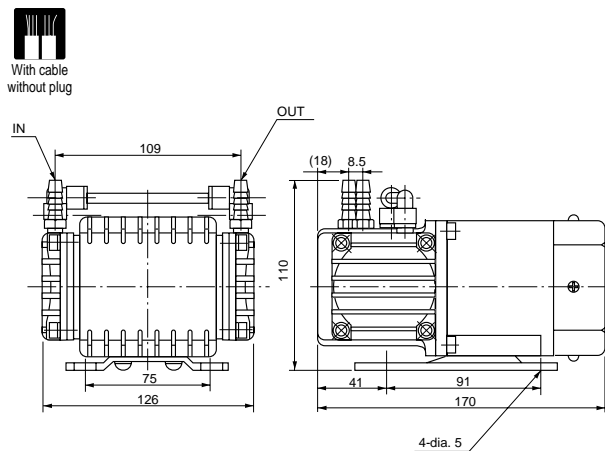
- (Vacuum)
- Vacuum chuck, vacuum tweezers
 - Absorption and transport of automatic machines
 - Vacuum packing printing machines
 - Suction unit
 - Tip mounter
- (Pressure)
- Increasing pressure source for automatic machines
 - Air pressure unit, printing machine
 - Otorhinolaryngology dental unit
 - Air pressure meter

Rocking Piston Type Dry Vacuum Pump DOP-9D

Actual pumping speed



External Dimension Diagram (unit: mm)

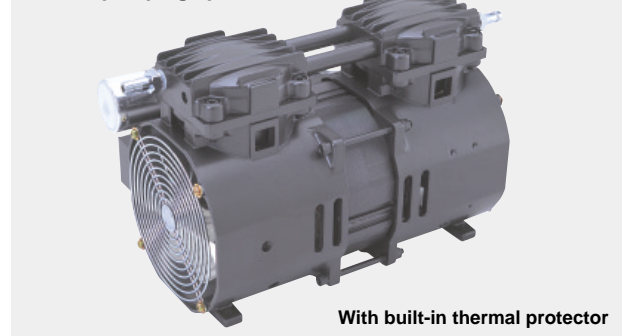


Specifications

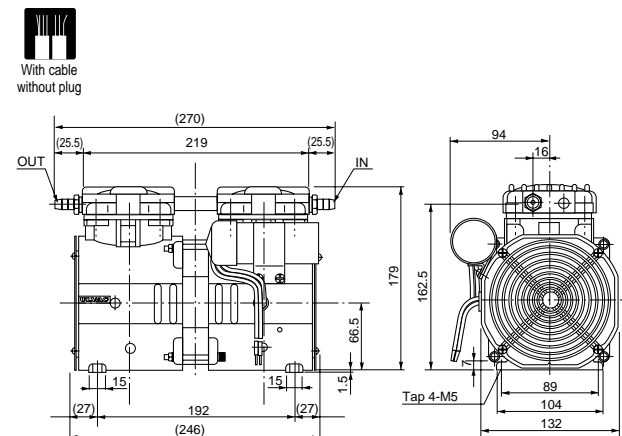
Unit	DOP-9D
Actual Pumping Speed L/min	9.0/9.8 (50/60Hz)
Ultimate pressure Pa	6.7×10^3
Motor	Single phase, 100V, 40W, 4P, Condenser run
Full load current A	1.1
Weight kg	3.0
Inlet, outlet pipe diameter mm	O.D. 8 x I.D. 5 (Rc 1/8)
Ambient operation temp. range °C	7 ~ 40
Overall dimensions mm	126(W) x 170(L) x 110(H)

Rocking Piston Type Dry Vacuum Pump DOP-80SP

Actual pumping speed



External Dimension Diagram (unit: mm)



Specifications

Unit	DOP-80S
Actual Pumping Speed L/min	80/88 (50/60Hz)
Ultimate pressure Pa	5.4×10^3
Motor	Single phase, 100V, 210W, 4P, Condenser run
Full load current A	3.2/3.9 (50/60Hz)
Weight kg	7.0
Inlet, outlet pipe diameter mm	O.D. 9 x I.D. 5 (Rc 1/4)
Ambient operation temp. range °C	7 ~ 40
Overall dimensions mm	160(W) x 270(L) x 179(H)

• DOP Series

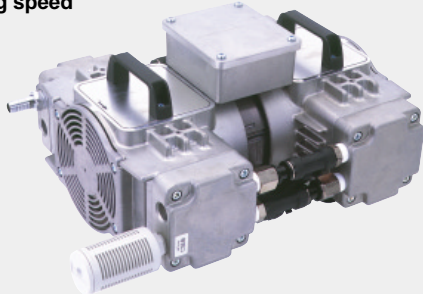
Model	Actual Pumping Speed (L/min)	Ultimate pressure (Pa)	Power required	Weight (kg)	Inlet pipe dimensions O.D. x I.D. (mm)	Overall dimensions W x L x H (mm)
*DOP-9D	9.0/9.8(50/60Hz)	6.7×10^{-3}	Single phase, 100V, 40W, 4P, Condenser run	3.0	8 x 5	126 x 170 x 110
*DOP-40D	40/44(50/60Hz)	1.2×10^{-3}	Single phase, 100V, 210W, 4P, Condenser run	7.0	9 x 5	160 x 270 x 179
*DOP-80S	80/88(50/60Hz)	5.4×10^{-3}	Single phase, 100V, 210W, 4P, Condenser run	7.0	9 x 5	160 x 270 x 179
*DOP-80SP	80/84(50/60Hz)	Pressure type	Single phase, 100V, 300W, 4P, Condenser run	9.0	9 x 5	160 x 288 x 181
DOP-200S	200/220(50/60Hz)	8.0×10^{-3}	Three phase, 200V, 280W, 4P	20.0	16.0 x 12.0	315 x 434 x 231
DOP-50S4	50/55(50/60Hz)	8.0×10^{-3}	Three phase, 200V, 280W, 4P	20.0	16.0 x 12.0	310 x 352 x 240
DOP-100T	100/110(50/60Hz)	0.4×10^{-3}	Three phase, 200V, 280W, 4P	20.0	16.0 x 12.0	315 x 434 x 231
DOP-100ST	100/110(50/60Hz)	8.0×10^{-3}	Three phase, 200V, 280W, 4P	20.0	16.0 x 12.0	320 x 434 x 231
DOP-50DT	50/55(50/60Hz)	1.2×10^{-3}	Three phase, 200V, 280W, 4P	20.0	16.0 x 12.0	310 x 379 x 231
DOP-50F	50/55(50/60Hz)	0.27×10^{-3}	Three phase, 200V, 280W, 4P	20.0	16.0 x 12.0	315 x 434 x 231
DOP-300S	300/330(50/60Hz)	8.0×10^{-3}	Three phase, 200V, 400W, 4P	20.0	16.0 x 12.0	315 x 443 x 231
DOP-150T	140/160(50/60Hz)	0.4×10^{-3}	Three phase, 200V, 400W, 4P	20.0	16.0 x 12.0	315 x 443 x 231

* : With built-in thermal protector

Rocking Piston Type Dry Vacuum Pump

DOP-300S

Actual pumping speed

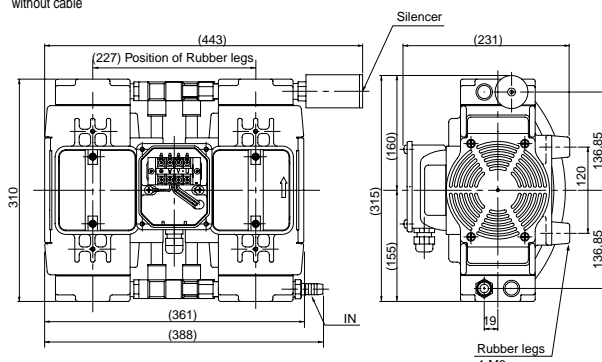


With built-in thermal protector

External Dimension Diagram (unit: mm)



With terminal
without cable



Specifications

Unit	DOP-300S
Actual Pumping Speed	L/min
	300/330 (50/60Hz)
Ultimate pressure	Pa
	8.0×10^{-3}
Motor	Three phase, 200V, 400W, 4P
Full load current	A
	2.5/2.3 (50/60Hz)
Weight	kg
	20.0
Inlet, outlet pipe diameter	mm
	O.D. 16.0 x I.D. 12.0 (Rc 1/2)
Ambient operation temp. range	°C
	0 ~ 40
Overall dimensions	mm
	315(W) x 443(L) x 231(H)

Pumping Speed Curve

DOP Series

